

FIRST CLASS COACH SALES CORP.
REPRESENTING ARBOC MOBILITY



Order Packet

Contract #TRIPS-10-SCLF-FCCS

Small Cutaway Low Floor Vehicle

CONTRACT #TRIPS-10-SCLF-FCCS

**ORDER PACKET FOR
21' - 26' SMALL CUTAWAY LOW FLOOR ARBOC BUSES
ON CHEVROLET 12,300 or 14,200 # GVWR CHASSIS
FIRST CLASS COACH SALES CORP.**

General Information

The Transit Research Inspection Procurement Services (TRIPS) issued Proposal #TRIPS-10-SCLF-RFP to establish a series of state contracts for the purchase of Small Cutaway Low Floor Bus Type Vehicles. Through this process two contracts were awarded to two different vendors each representing a different vehicle manufacturer.

This Order Packet is for Contract #TRIPS-10-SCLF-FCCS, which was awarded to First Class Coach Sales Corp. in June 2010 to provide Arboc Bus Type Vehicles in lengths of 21 - 26 feet on an Chevrolet Chassis.

This Order Packet contains the necessary instructions and forms for agencies to place an order with First Class Coach Sales Corp. to purchase these vehicles. This information can also be found at the TRIPS website – <http://www.tripsflorida.org>. This Order Packet provides guidance and clarity on the relationships between the seller, the buyer, and Florida DOT's TRIPS program.

The complete Contract #TRIPS-10-SCLF-FCCS, including required signed documents and certifications, contains the following sections:

- Part 1 - General Requirements and Conditions, and Contractual Provisions (Including copies of all U.S. DOT Federal Transit Administration certifications)
- Part 2 - Technical Specifications
- Part 3 - Options
- Part 4 - Quality Assurance Provisions
- Part 5 - Warranty Provisions
- Part 6 - Paint Schemes.

For further information on the TRIPS Program and Contract #TRIPS-10-SCLF-FCCS, please contact either Edward Bart (813-974-6693) or Cindy Wooten (813-974-9771) at the University of South Florida Center for Urban Transportation Research (CUTR).

Vendor Information

To place an order for a vehicle under Contract #TRIPS-10-SCLF-FCCS, contact Ron Obert, President at First Class Coach Sales Corp.:

- Address: 11226 Boggy Creek Road, Orlando, FL 32824
- Telephone: (866) 942-5544 toll free or (321) 438-9610
- Fax: (407) 472-4801
- Email: rono@firstclasscoachsales.com

Ordering, Delivery, and Payment

Procedures contained in this section will be used by agencies and vendors to provide guidance in the ordering of and payment for new vehicles. Agencies should understand that each order placed with and acknowledged by First Class Coach Sales Corp. constitutes a contract between the purchaser and First Class Coach Sales Corp. only. The contract implies no duties or responsibilities by the University of South Florida, Center for Urban Transportation Research (CUTR), or the Florida Department of Transportation (FDOT). The terms and conditions of the said contract are to be administered and enforced by and between the purchaser and vendor. All parties are advised to fully review the full contract document available on the TRIPS website. Contract #TRIPS-10-SCLF-FCCS will be the governing document.

Ordering Instructions

Agencies must utilize the order forms in this Order Packet to place their orders. Agencies are encouraged to contact and work closely with First Class Coach Sales Corp. in finalizing their orders, to fully understand the options available, to select the floor plans and seating selections, the paint schemes, and any special options or conditions that may impact the final order and purchase price. Please submit a separate order form for each vehicle ordered.

Contract #TRIPS-10-SCLF-FCCS is to provide Arboc Small Cutaway Low floor Bus in lengths of 21 - 26 feet on Chevrolet chassis. Among the standard components of this vehicle are:

- Chevrolet 12,300 or 14,200 # GVWR chassis

- 6.0L Vortec V8 gasoline engine
- Rear wheel drive with 6 speed automatic transmission
- Steel wheels with mounted spare
- Dual 770 CCA batteries with main disconnect switch
- LED lighting inside and exterior
- OEM driver seat with right arm rest
- Braun RA300-3462 Bi-fold ramp
- Steel rear bumper painted black and chrome front bumper

Most agencies already have an idea on the type and number of seats and wheelchair positions needed to meet their floor plan requirements. A wide variety of floor plans are available for your needs. Agencies should work closely with First Class Coach Sales Corp. to develop and finalize their floor layout plans. After this consultation, First Class Coach Sales Corp. will develop a proposed floor plan based on the Agency's needs and fax a copy of the plan to the Agency for verification and approval.

The Order Packet also includes illustrations of the basic vehicle paint scheme and the description of the available options to assist the Agency in completing orders. Included in this Order Packet are the following forms and information:

- Order Form that provides:
 - Base vehicle prices
 - Unit seating and wheelchair station prices
 - Paint scheme options and prices
 - Available options and pricing
- Sample Order Form – providing an example as how to complete the order form
- Description of Options
- Available Paint Schemes
- Floor Plan Layout Samples

A separate order form must be completed for each vehicle ordered. After determining the length of bus, floor plan, paint scheme and desired individual options, to complete the order form place the number of items in the corresponding quantity column. Multiply the dollar figure in the cost column by the number of items in the quantity column to calculate a total cost for that item. Enter that amount in the total cost column. Add the total cost column amounts together to arrive at the grand total for the vehicle. The grand total will be the figure used on the Agency's purchase order or check with the exception of FTA Section 5310 funded vehicles. These agency purchase orders should be in the amount of the agency portion of the grand total.

Unless your vehicle is funded in part by the FTA Section 5310 grant program, the

Agency will deal directly with First Class Coach Sales Corp.

Once the details of the order are finalized, an Agency Purchase Order must accompany all orders placed with First Class Coach Sales Corp. for those vehicles funded outside the FTA Section 5310 grant program.

For all vehicles funded through the FTA Section 5310 grant program, a copy of the completed order form and either an Agency purchase order or a check for the Agency's portion payable to First Class Coach Sales Corp. must be mailed, emailed or faxed to the CUTR Section 5310 Program Coordinator:

Ms. Cindy Wooten
CUTR Section 5310 Program Coordinator
USF-CUTR
4202 E. Fowler Avenue – CUT100
Tampa, Florida 33620-5375
Telephone: (813) 974-9771
Fax: (813) 396-9345

The CUTR Section 5310 Program Coordinator will verify the order accuracy, complete the request for the FDOT share, and forward the request to Tallahassee for the FDOT purchase order. When the FDOT purchase order number is assigned, the CUTR Section 5310 Program Coordinator will place the order with First Class Coach Sales Corp. and notify the Agency of the status.

First Class Coach Sales Corp. will provide written confirmation to the Agency and/or CUTR of the receipt of the order within seventy-two (72) hours of receiving the order with purchase order. At a minimum, the acknowledgement of the order will contain:

- The agency's P.O. number
- Date order was received
- Date order was placed with the manufacturer
- The production / VIN when available
- Estimated delivery date (when available)

Delivery

Completed units must be delivered to Agency within ninety (90) days from receipt of chassis or purchase order, whichever occurs last.

In the event of delay in completion of the delivery of vehicles beyond the date specified in the contract, in addition to any granted extensions agreed to in writing by the Agency,

the Agency may assess liquidated damages of twenty five dollars (\$25.00) per calendar day per vehicle.

Each vehicle purchased through the TRIPS Program shall be routed to the FDOT's Springhill Inspection Facility, located in Tallahassee, Florida, for an inspection prior to delivery to First Class Coach Sales Corp.

First Class Coach Sales Corp. should see that all noted defects are corrected prior to final delivery to the procuring agency. This inspection by TRIPS is not represented as being "all inclusive" and in no way relieves the dealer from the required Pre-Delivery Inspection (PDI).

Prior to the vehicle(s) being delivered, First Class Coach Sales Corp. must perform a PDI. Upon completion of a PDI, First Class Coach Sales Corp. will be required to deliver the vehicles to the Purchaser. The dealer shall notify the purchasing Agency a minimum of 48 hours in advance to arrange a delivery time and notify the FDOT District Office of the scheduled delivery.

The vehicle shall be delivered with all Contractor/manufacturer's quality control checklists including road test and final inspection (properly completed and signed by an authorized plant representative). Other documents/items required at delivery include:

- Manufacturer's Certificate of Origin
- Application for Certificate of Title
- Bill of Sale
- Warranty Papers (forms, policy, procedures)
- Maintenance Schedule
- Operators' manual
- Invoice (To include contract number, P.O. number, VIN, and agency name)

Final Acceptance

Delivery of the vehicle(s) by First Class Coach Sales Corp. does not constitute acceptance by the Agency. The vehicle will be considered "accepted" upon passing the inspection and issuance of an acceptance letter by the Agency. The terms of the contract state that an Agency has ten (10) calendar days after receiving the vehicle(s) to perform the Delivery Inspection and issue either a "Letter of Acceptance" or a "Letter of Rejection" to First Class Coach Sales Corp. and the Florida DOT District Office contact. The "Letter of Rejection" will state and describe the areas to be found in noncompliance with the bid specifications, incompleteness, or any defective or damaged parts.

A vehicle should be rejected if any items are missing, defective, altered, incorrect, or

incomplete. In the event a vehicle(s) is delivered incomplete or contains any defective or damaged parts, the said parts will be removed and replaced by First Class Coach Sales Corp. New parts will be furnished and installed by First Class Coach Sales Corp. at no cost to the Agency. If there is work involved, warranty or otherwise, to repair or place the vehicle(s) in proper complete condition, such repairs will be made by an approved firm in accordance with the warranty provisions of the contract.

Placing the vehicle(s) in revenue service will automatically constitute "acceptance". In such circumstances, a "Letter of Acceptance" should still be sent to First Class Coach Sales Corp.

Acceptance of the vehicles shall not release the Contractor from liability for faulty workmanship or materials.

Payment

For a vehicle purchased without funding from the FTA Section 5310 grant program, the Agency should complete all necessary paperwork and submit its request to process the Agency purchase order payment within ten (10) days after the delivery and/or acceptance of the vehicle.

For all vehicles funded through the FTA Section 5310 grant program, the Agency should approve and process its purchase order to allow a check for the Agency amount to be sent to First Class Coach Sales Corp. for its share of the vehicle. If, instead of a purchase order, a check was provided at the order request time, forward all invoices to the CUTR Section 5310 Program Coordinator along with the acceptance letter.

Upon receipt of the Agency's Letter of Acceptance, First Class Coach Sales Corp. will contact the CUTR Section 5310 Program Coordinator with an invoice to approve and process the FDOT purchase order payment.

The total purchase price should be paid in full within sixty (60) days after acceptance of each vehicle. Agencies should note that failure to meet the net 60-day payment terms could result in the assessment of interest and other penalties. Terms are those shown in Price Proposal Form F of the contract document. A 2% monthly service charge will be added to all past due accounts.

EXHIBIT A

SAMPLE ORDER FORM

SAMPLE ORDER FORM-PAGE 1
TRIPS-10-SCLF-FCCS
(21' - 26' Small Cutaway Low Floor Type Vehicles)
First Class Coach Sales Corp.

AGENCY NAME: _____ DATE: _____

PURCHASE ORDER NUMBER: _____

CONTACT PERSON: _____
(Name, telephone number, email address)

Options & Pricing Effective: June 2010

Item	Unit Cost	Quantity	Total Cost
Base Vehicle - 6.0LVortec V8 Gasoline Engine			
21 Foot length 12,300# GVWR chassis	\$104,400	1	\$104,400
23 Foot length 14,200# GVWR chassis	\$111,100		
26 Foot length 14,200# GVWR chassis	\$114,600		
Seating			
Mid High Back passenger seat <i>(standard, per person)</i>	\$270	10	\$2,700
Fold-away passenger seat <i>(standard, two person seat)</i>	\$800	1	\$800
Children's seat	\$500		
Paint Schemes			
Paint scheme 1 <i>(standard)</i>	\$1,200		
Paint scheme 2	\$1,200	1	\$1,200
Paint scheme 3	\$2,000		
-	-	-	-
SUB-TOTAL PAGE ONE	-	-	\$109,100

SAMPLE ORDER FORM-PAGE 2
TRIPS-10-SCLF-FCCS
(21' - 26' Small Cutaway Low Floor Type Vehicles)
First Class Coach Sales Corp.

Item	Unit Cost	Quantity	Total Cost
General Options			
Chevrolet 300 HP, 6.6L Duramax engine <i>(meets 2010 Emissions)</i>	\$15,900		
VTM Hybrid drive train integrated with: <i>(check one)</i> gas___ diesel___	\$43,000		
Manufacturers Extended Warranty <i>(detail coverage miles / months)</i>	See Part 5		
Stainless steel wheel liners / inserts, front & rear wheels	\$275		
Merlin Multiplex Programmable Vehicle Control System	\$2,100		
Freedman High Back passenger seat – Upgrade to Standard <i>(Per person)</i>	\$30		
Upholstery with <i>Nanocide</i> antimicrobial protection, <i>(Per person)</i>	\$10	12	\$120
Upgrade interior side wall panels with <i>Nanocide</i>	\$350		
Upgrade ceiling panels with <i>Nanocide</i>	\$200		
Extend length of the standard seat belts provided <i>(Per person)</i>	\$20		
USSC Evolution G2E Driver seat with pedestal	\$1,500		
Freedman Sport Driver seat with Relaxor	\$1,100	1	\$1,100
Altro <i>Transflor</i> Slip Resistant Vinyl Flooring	\$750		
Driver Safety Partition, stainless or yellow powder coat	\$250	1	\$250
Bentech Powder-Coated color handrails and stanchions	\$300		
Exterior remote controlled mirrors	\$500		
Romeo Rim HELP Rear Bumper <i>Only</i>	\$650		
Romeo Rear HELP Bumper with Collision Avoidance System	\$1,200		
-	-	-	-
SUB-TOTAL PAGE TWO	-	-	\$1,470

SAMPLE ORDER FORM-PAGE 3
TRIPS-10-SCLF-FCCS
(21' - 26' Small Cutaway Low Floor Type Vehicles)
First Class Coach Sales Corp.

Item	Unit Cost	Quantity	Total Cost
General Options (Continued)			
Transpec Rear HELP Bumper	\$550		
Mobile Optics Reverse Camera and Monitor Backing System	\$700	1	\$700
JKA <i>Breath Right</i> Air Purification System	\$3,400		
Ricon "BR2C-02" wheel chair ramp	<i>No Charge</i>		
Q'Straint <i>QRTMAX</i> wheel chair securement system	\$600	2	\$1,200
Stretcher securement system without bed	\$1,000		
Stretcher bed ONLY (<i>varies by manufacturer</i>)	Call for quote		
Amerex Automatic Fire Suppression Powder System	\$3,200	1	\$3,200
247 Security Event Data Recorder	\$2,675		
Security Camera - <i>each</i>	\$400		
Mentor <i>Ranger</i> In-Vehicle Computer for Driver Assistance	\$4,800		
REI Public Address System	\$350	1	\$350
Upgrade standard radio AM/FM/CD/MP3 and speaker system	\$100	1	\$100
Transign manually operated roller Mylar curtain type sign	\$1,350	1	\$1,350
TwinVision <i>Elyse</i> software electronic sign system	\$6,000		
TwinVision <i>Mobi-Lite</i> electronic sign system	\$3,500		
Transign 2-digit Block/Run Number Box Unit	\$350		
Transign 3-digit Block/Run Number Box Unit	\$400		
Transign Passenger "STOP REQUESTED" sign	\$285	1	\$285
-	-	-	-
SUB-TOTAL PAGE THREE	-	-	\$7,185

SAMPLE ORDER FORM-PAGE 4
TRIPS-10-SCLF-FCCS
(21' - 26' Small Cutaway Low Floor Type Vehicles)
First Class Coach Sales Corp.

Item	Unit Cost	Quantity	Total Cost
Other Manufacturer Options Available			
Fogmaker Fire Suppression System	\$3,500		
Sure-Lok (AL7605-S-4C) Tie-down w/Solo	\$630		
Echo Back-up Alarm System	\$550		
Ramp activation warning light & buzzer	\$200	1	\$200
Driver storage compartment	\$225	1	\$225
Freedman TDDS Tie-down under seat storage	\$90		
Full body paint different than standard	\$3,300		
Q'Straint Floor L-Track (Per 100")	\$100		
6.6L Duramax Diesel – 2007 Emission (<i>limited availability</i>)	\$11,500		
3-Point Seats - Regular with CMI fabric – (<i>per person</i>)	\$360		
3-Point Seats – Foldaway with CMI fabric – (<i>per person</i>)	\$520		
-	-	-	-
SUB-TOTAL PAGE FOUR ABOVE	-	-	\$425
SUB-TOTAL PAGE THREE	-	-	\$7,185
SUB-TOTAL PAGE TWO	-	-	\$1,470
SUB-TOTAL PAGE ONE	-	-	\$109,100
	-	-	-
GRAND TOTAL (SUM OF SUB-TOTALS 1 THROUGH 4)	-	-	\$118,180

SAMPLE CHOICES FORM-PAGE 1

TRIPS-10-SCLF-FCCS

(21' - 26' Small Cutaway Low Floor Type Vehicles)
First Class Coach Sales Corp.

SEATING AND FLOORING CHOICES

Seating Colors: (circle one) blue beige

Flooring Colors: gray

EXTERIOR PAINT SCHEMES

Paint Scheme: (circle one) #1 #2 #3

All paint scheme pricing shall reflect white base coat. If an agency requires a specialized paint and/or lettering scheme that is NOT GENERALLY covered by one of those listed above, they may make separate arrangements either with the manufacturer or a local vendor to provide these services.

UPHOLSTERY INFORMATION

STANDARD VINYL COLORS

BLUE CMI VINYL – Center insert of seat to be *Medallion Keops Azul* Blue Insert, style VP-Medli-Keazu; outside wrap and back of seat to be solid *Medallion Morreno Tropicana Azul*, style VP-MEDMO-TRAZU.

BEIGE CMI VINYL – Center insert of seat to be *Medallion Keops Verde* Tan insert, style VP-MEDLI-KEVER; outside wrap and back of seat to be solid, *Medallion Docca* Sand Beige, style VP-MEDLI-DOSNB.

SAMPLE CHOICES FORM-PAGE 2
TRIPS-10-SCLF-FCCS
(21' - 26' Small Cutaway Low Floor Type Vehicles)
First Class Coach Sales Corp.

WHEELCHAIR RAMP CHOICES

Wheel Chair Ramp: (circle one) Braun Ricon

TWO-WAY RADIO WIRING SETUP

Radio works with (circle one) Ignition On Only Ignition On or Off

FIRE SUPPRESSION SYSTEM

Suppression System (circle one) Amerex Fogmaker

EXHIBIT B

ORDER FORM

ORDER FORM-PAGE 1

TRIPS-10-SCLF-FCCS
(21' - 26' Small Cutaway Low Floor Type Vehicles)
First Class Coach Sales Corp.

AGENCY NAME: _____ DATE: _____

PURCHASE ORDER NUMBER: _____

CONTACT PERSON: _____
(Name, telephone number, email address)

Options & Pricing Effective: June 2010

Item	Unit Cost	Quantity	Total Cost
Base Vehicle – 6.0Lvortec V8 Gasoline Engine			
21 Foot length 12,300# GVWR chassis	\$104,400		
23 Foot length 14,200# GVWR chassis	\$111,100		
26 Foot length 14,200# GVWR chassis	\$114,600		
Seating			
Mid High Back passenger seat – Standard <i>(per person)</i>	\$270		
Fold-away passenger seat – Standard <i>(two person seat)</i>	\$800		
Children's seat	\$500		
Paint Schemes			
Paint scheme 1 – Standard	\$1,200		
Paint scheme 2	\$1,200		
Paint scheme 3	\$2,000		
-	-	-	-
SUB-TOTAL PAGE ONE	-	-	

ORDER FORM-PAGE 2

**TRIPS-10-SCLF-FCCS
(21' - 26' Small Cutaway Low Floor Type Vehicles)
First Class Coach Sales Corp.**

Item	Unit Cost	Quantity	Total Cost
General Options			
Chevrolet 300 HP, 6.6L Duramax engine <i>(meets 2010 Emissions)</i>	\$15,900		
VTM Hybrid drive train integrated with: <i>(check one)</i> gas___ diesel___	\$43,000		
Manufacturers Extended Warranty <i>(detail coverage miles / months)</i>	See Part 5		
Stainless steel wheel liners / inserts, front & rear wheels	\$275		
Merlin Multiplex Programmable Vehicle Control System	\$2,100		
Freedman High Back passenger seat – Upgrade to Standard <i>(Per person)</i>	\$30		
Upholstery with <i>Nanocide</i> antimicrobial protection, <i>(Per person)</i>	\$10		
Upgrade interior side wall panels with <i>Nanocide</i>	\$350		
Upgrade ceiling panels with <i>Nanocide</i>	\$200		
Extend length of the standard seat belts provided <i>(Per person)</i>	\$20		
USSC Evolution G2E Driver seat with pedestal	\$1,500		
Freedman Sport Driver seat with Relaxor	\$1,100		
Altro <i>Transflor</i> Slip Resistant Vinyl Flooring	\$750		
Driver Safety Partition, stainless or yellow powder coat	\$250		
Bentech Powder-Coated color handrails and stanchions	\$300		
Exterior remote controlled mirrors	\$500		
Romeo Rim HELP Rear Bumper <i>Only</i>	\$650		
Romeo Rear HELP Bumper with Collision Avoidance System	\$1,200		
-	-	-	-
SUB-TOTAL PAGE TWO	-	-	

ORDER FORM-PAGE 3

TRIPS-10-SCLF-FCCS
(21' - 26' Small Cutaway Low Floor Type Vehicles)
First Class Coach Sales Corp.

Item	Unit Cost	Quantity	Total Cost
General Options (Continued)			
Transpec Rear HELP Bumper	\$550		
Mobile Optics Reverse Camera and Monitor Backing System	\$700		
JKA <i>Breath Right</i> Air Purification System	\$3,400		
Ricon "BR2C-02" wheel chair ramp	<i>No Charge</i>		
Q'Straint <i>QRTMAX</i> wheel chair securement system	\$600		
Stretcher securement system without bed	\$1,000		
Stretcher bed ONLY (<i>varies by manufacturer</i>)	Call for quote		
Amerex Automatic Fire Suppression Powder System	\$3,200		
247 Security Event Data Recorder	\$2,675		
Security Camera – <i>each</i>	\$400		
Mentor <i>Ranger</i> In-Vehicle Computer for Driver Assistance	\$4,800		
REI Public Address System	\$350		
Upgrade standard radio AM/FM/CD/MP3 and speaker system	\$100		
Transign manually operated roller Mylar curtain type sign	\$1,350		
TwinVision <i>Elyse</i> software electronic sign system	\$6,000		
TwinVision <i>Mobi-Lite</i> electronic sign system	\$3,500		
Transign 2-digit Block/Run Number Box Unit	\$350		
Transign 3-digit Block/Run Number Box Unit	\$400		
Transign Passenger "STOP REQUESTED" sign	\$285		
-	-	-	-
SUB-TOTAL PAGE THREE	-	-	

SAMPLE ORDER FORM-PAGE 4
TRIPS-10-SCLF-FCCS
(21' - 26' Small Cutaway Low Floor Type Vehicles)
First Class Coach Sales Corp.

Item	Unit Cost	Quantity	Total Cost
Other Manufacturer Options Available			
Fogmaker Fire Suppression System	\$3,500		
Sure-Lok (AL7605-S-4C) Tie-down w/Solo	\$630		
Echo Back-up Alarm System	\$550		
Ramp activation warning light & buzzer	\$200		
Driver storage compartment	\$225		
Freedman TDDS Tie-down under seat storage	\$90		
Full body paint different than standard	\$3,300		
Q'Straint Floor L-Track (Per 100")	\$100		
6.6L Duramax Diesel – 2007 Emission (<i>limited availability</i>)	\$11,500		
3-Point Seats – Regular with CMI fabric – (<i>per person</i>)	\$360		
3-Point Seats – Foldaway with CMI fabric – (<i>per person</i>)	\$520		
-	-	-	-
SUB-TOTAL PAGE FOUR ABOVE	-	-	
SUB-TOTAL PAGE THREE	-	-	
SUB-TOTAL PAGE TWO	-	-	
SUB-TOTAL PAGE ONE	-	-	
-	-	-	-
GRAND TOTAL (SUM OF SUB-TOTALS 1 THROUGH 4)	-	-	

CHOICES FORM-PAGE 1

TRIPS-10-SCLF-FCCS
(21' - 26' Small Cutaway Low Floor Type Vehicles)
First Class Coach Sales Corp.

SEATING AND FLOORING CHOICES

Seating Colors: (circle one) blue beige

Flooring Colors: gray

EXTERIOR PAINT SCHEMES

Paint Scheme: (circle one) #1 #2 #3

All paint scheme pricing shall reflect white base coat. If an agency requires a specialized paint and/or lettering scheme that is NOT GENERALLY covered by one of those listed above, they may make separate arrangements either with the manufacturer or a local vendor to provide these services.

UPHOLSTERY INFORMATION

STANDARD VINYL COLORS

BLUE CMI VINYL - Center insert of seat to be *Medallion Keops Azul* Blue Insert, style VP-Medli-Keazu; outside wrap and back of seat to be solid *Medallion Morreno Tropicana Azul*, style VP-MEDMO-TRAZU.

BEIGE CMI VINYL - Center insert of seat to be *Medallion Keops Verde Tan* insert, style VP-MEDLI-KEVER; outside wrap and back of seat to be solid, *Medallion Docca Sand* Beige, style VP-MEDLI-DOSNB.

CHOICES FORM-PAGE 2

TRIPS-10-SCLF-FCCS
(21' - 26' Small Cutaway Low Floor Type Vehicles)
First Class Coach Sales Corp.

WHEEL CHAIR RAMP CHOICES

Wheel Chair Ramp: (circle one) Braun Ricon

TWO-WAY RADIO WIRING SETUP

Radio works with (circle one) Ignition On Only Ignition On or Off

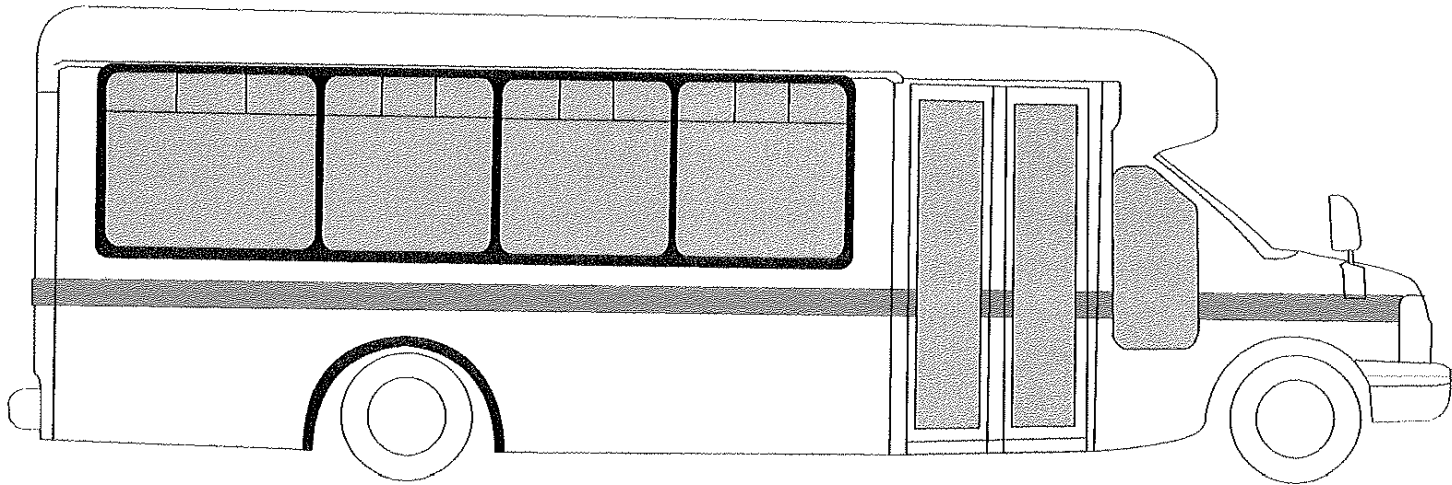
FIRE SUPPRESSION SYSTEM

Suppression System (circle one) Amerex Fogmaker

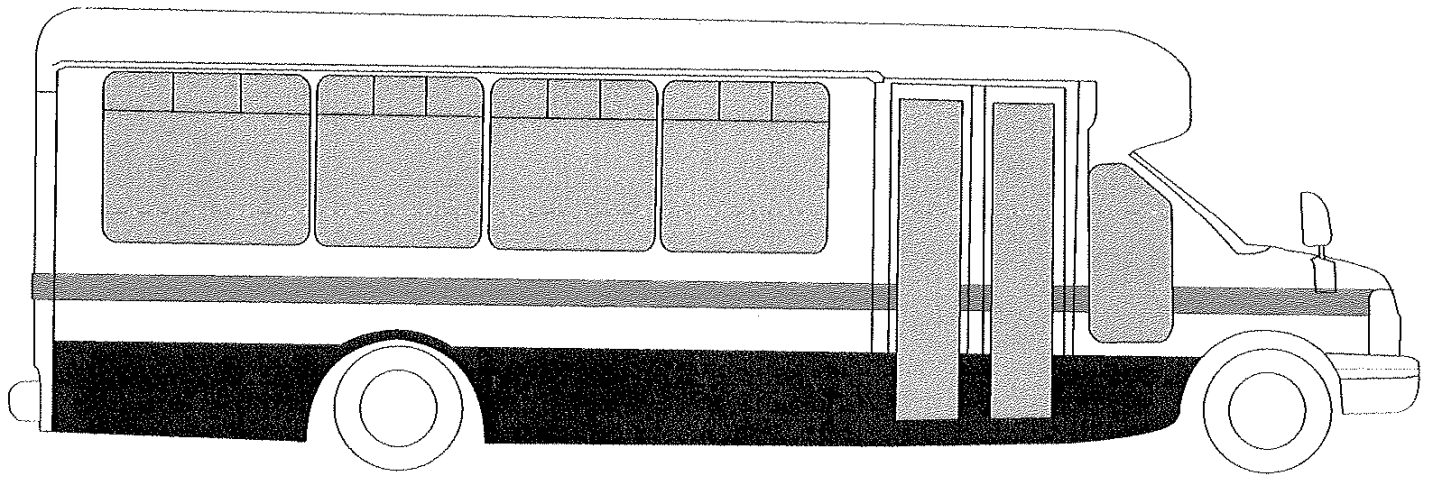
EXHIBIT C

PAINT SCHEMES

Paint Scheme Option #1 (Standard)



Paint Scheme Option #2



Paint Scheme Option #3

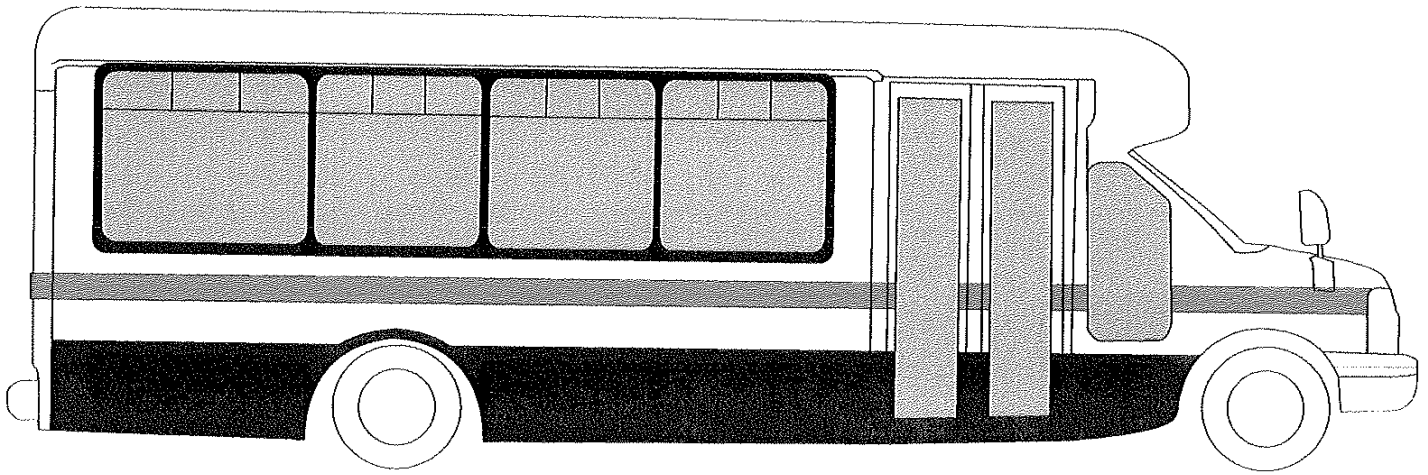


EXHIBIT D

OPTIONS

OPTIONS

TRIPS-10-SCLF-FCCS
(21' – 26' Small Cutaway Low Floor Type Vehicles)
First Class Coach Sales Corp.

3.2.2.0 ALTERNATIVE ENGINE, DIESEL, HYBRID OR MULTI- FUEL

- 3.2.2.2 GM 6.6 Liter Duramax Diesel engine meeting current EPA requirements in place of the standard gasoline engine. Engine must meet standards described in Part 2, Section 2.2.2.
- 3.2.2.3 A VTM hybrid drive train integrated with diesel or gasoline engine.
- 3.2.2.3 Alternative Multi-Fuel engine capable of running on a specific type of man made fuel additive or a multi-fuel engine capable of running on a variety of alternative substitute fuels.
- 3.2.2.4 Provide Manufacturers Extended Warranty identifying maximum mileage and maximum months covered for the OEM Chassis, Manufacturers Warranty, Air Conditioning System, Alternator and Wheelchair Ramp, including any other facets of vehicle to be covered, with the total cost.

3.2.9.0 WHEELS

- 3.2.9.1 Provide Aluminum wheels in place of standard steel wheels.
- 3.2.9.2 Equip bus with stainless steel wheel liners / inserts on both front and rear wheels. Liner / inserts shall be Versa-Liner and made of 304L stainless steel with permanently attached simulated lug nuts. The simulated lug nuts shall not interfere with the actual lug nut to wheel contact surfaces.

3.2.10.0 ELECTRICAL

- 3.2.10.5 Provide the Merlin Multiplex Programmable Electronic Vehicle Control System including the Intelligent Switch Panel (ISP) and the Digital Power Center (DPC).

3.2.21.0 SEATS, BELT EXTENSIONS, & SEAT UPHOLSTERY

- 3.2.21.16 Freedman Seating Featherweight High Back rigid frame seats.

3.2.21.17 Provide all Freedman seat upholstery material with “*Dimensions With Nanocide*” provided by CMI Enterprises. Dimensions shall be top coated with “*Blockade*”, for advanced antimicrobial protection and cleanability. Contractor shall provide standard samples for interior color coordination.

3.2.21.18 **LEFT BLANK**

3.2.21.19 Upgrade interior side wall panels with Nanocide antimicrobial fabric, from the ceiling light fixtures down to the seat track, or 12 inches (12”) above the floor covering. CMI Nanocide is described above in **Part 3: Options: 3.2.21.18.**

3.2.21.20 Extend the length of the standard seat belts provided. Two seat belt extensions are to be provided as standard. A third or more seat belt extensions may be purchased.

3.2.24.0 DRIVER’S SEAT

3.2.24.2 USSC Evolution G2E with pedestal.

3.2.24.3 Freedman Sport Driver’s seat with Relaxor, four zone eight motor system with lumbar heat in place of standard driver’s seat.

3.2.25.0 NON-SLIP TRANSIT FLOORING

3.2.25.3 Provide Altro Transflor slip resistant sheet vinyl flooring with smooth, all welded seams. Each customer will determine color / design selection. Include Altro step tread material with *yellow* step nosing and *white* “standee line” insert.

3.2.26.0 DRIVER SAFETY PARTITION

3.2.26.3 To prevent passenger physical contact with the driver, install a 1/4” Lexan shield wall, 3” below the ceiling to 36” above the floor; and a modesty panel from below the Lexan Plex shield frame to 3” above the floor, supported by stainless-steel tubing, similar in construction and design to the modesty panel adjacent to the front passenger door. Unit shall be designed to permit attachment of customer notification panel and/or pamphlet holder units.

3.2.27.0 GRAB RAILS AND STANCHIONS

3.2.27.6 Powder-Coated handrails and stanchions to match the vehicle interior and manufactured by Bentec, Inc.

3.2.31.0 REMOTE EXTERIOR MIRRORS

3.2.31.5 Provide right and left side exterior remote controlled mirrors, adjustable from the driver's seat.

3.2.34.0 BUMPERS & REVERSE ASSISTANCE DETECTION SYSTEM

3.2.34.2 Rear energy absorbing Romeo Rim HELP bumper assembled with HawKEye Reverse Assistance System, (Romeo Rim Help Guard) in place of standard rear steel bumper.

3.2.34.3 Reverse camera and monitor backing system, in lieu of HawkEye System above.

3.2.36.0 Air Purification System

3.2.36.5 The air purification system shall be JKA Company, BREATH SAFE SYSTEMS or approved equal. The system shall be designed for Paratransit bus application to eliminate the spread of virus, bacteria, odors, mold and fungus growth within the bus air conditioning evaporator coils and drain pan.

3.2.37.0 ADA MOBILITY DEVICES

3.2.37.3 Ricon BR2C-02 wheel chair ramp.

3.2.38.0 SECUREMENT DEVICES

3.2.38.15 Install a stretcher securement system in the rear aisle of the bus. A lock-down system shall be installed in floor at the rear and front of the stretcher for securement of brackets that connect to the stretcher frame. A storage container(s) shall be securely installed at the rear interior corner(s) of the bus for the purpose of storing the brackets when not in use. With this option, the air ride system should be adjusted down to reduce the ground-to-floor distance. Provide the accompanying stretcher bed for the securement system described above.

3.2.38.16 Stretcher bed (only) as an option

3.2.39.0 SAFETY EQUIPMENT

3.2.39.8 LEFT BLANK

3.2.39.9 Amerex Small Vehicle System (SMVS), a complete turn-key automatic fire suppression powder system.

- 3.2.39.10 Event Data Recorder with G-force accelerometer in 3 axes (as per standard), minimum eight (8) driver function monitoring sensors (brake, reverse, left turn signal, right turn signal, hazard 4-way warning lights, horn and speed.
- 3.2.39.11 Provide Camera System, priced per camera.
- 3.2.39.12 "*Mentor Ranger*", an in-vehicle computer, manufactured by Mentor, that allows electronic delivery of passenger manifests, automatic data collection, in-vehicle navigation, and enhanced driver/dispatcher communication. The system shall be capable of integration to other on-board systems, including existing APC, IVR and GPS onboard units, and shall be a turn-key installation.

3.2.40.0 PA & ENTERTAINMENT SYSTEMS

- 3.2.40.2 Install a Radio Engineering Industries (REI) public address system with hand-held microphone within easy reach of the driver with a microphone jack for optional hands-free use by driver. If an audio entertainment center (**3.2.40.3**) is installed, utilize its speakers in mid and rear bus and install a cancel switch to turn off entertainment center system when microphone transmit button is depressed by driver. Provide a 20' long microphone extension cord and provide a microphone jack adjacent to the front curb-side seat.
- 3.2.40.3 Upgrade the standard vehicle AM/FM Radio, providing a AM/FM/CD Stereo and MP3 Player with digital clock, with front, mid-bus and rear speakers.

3.2.41.0 DESTINATION SIGNS

- 3.2.41.2 A manually operated destination sign for limited destination readings shall be offered. Front destination sign shall be a Transign LLC, single roller curtain type installed above the windshield with a glass exposure of 8 inches x 60 inches. The side destination sign for a front door only bus will be a single roller type installed in the upper curbside window immediately behind the entrance door with a glass exposure of 5-3/4" x 28". The side destination sign for a front and rear door bus shall be installed in the upper curbside window immediately in front of the rear door. Destination signs will be electrically operated, LED, fluorescent or incandescent backlit display, single curtain, .003 mil. thick Mylar anti-glare material, with provisions for a minimum of 25 readings and a maximum of 175 readings of 5 inch high Helvetica medium font letters for the front sign and Helvetica medium font letters 4" high characters for the side sign. Control switch is to be located on the left hand of the driver's console. Curtain destination signs will conform to the Americans With Disabilities Act Part 38. Characters on these signs will have a width-to-height ratio between 3:5 and 1:1 and a stroke width-to-height ratio between 1:5 and 1:10. Generally, the space between letters will be 1/16 the height of upper case letters and will contrast with the background using either yellow

letters on green or black background; or white letters on red, green, blue or black background per the purchaser's choice, for route and destination the driver's console. Curtain destination signs will conform to the Americans With Disabilities Act Part 38. Characters on these signs will have a width-to-height ratio between 3:5 and 1:1 and a stroke width-to-height ratio between 1:5 and 1:10. Generally, the space between letters will be 1/16 the height of upper case letters and will contrast with the background using either yellow letters on green or black background; or white letters on red, green, blue or type installed above the windshield with a glass exposure of 8 inches x 60 black background per the purchaser's choice, for route and destination identification. The following destination readings will be standard on all destination signs ordered under this contract, with colors noted:

Bus Garage (yellow letters on black background)
Not In Service (yellow letters on black background)
Special Service (yellow letters on black background)
Shuttle Service (yellow letters on black background)
Downtown (yellow letters on green background)
Town Center (yellow letters on green background)
Public Transportation (yellow letters on green background)
Emergency Service (white letters on red background)
Emergency Shelter (white letters on red background)
Evacuation Route (white letters on red background)
Express (white letters on red background)

- 3.2.41.3 Twin Vision Elyse software Electronic Destination system full front and side signs; and a separate rear number only sign shall be provided. The system shall be compatible with Windows 2000 or Windows XP software, using IBM 486 or higher PC/AT capacity, PCMCIA memory download technology. Electronic destination signs will conform to the Americans With Disabilities Act Part 38. The electronic destination sign shall utilize Helvetica yellow medium lettering on black background. The readings listed in 2.42.1 above, shall also be standard in all Elyse electronic destination signs ordered under this contract.
- 3.2.41.4 A Twin Vision Mobi-Lite electronic destination sign, with side destination sign, using amber LED's and has fully programmable features that allow both large single and double line capabilities. The readings listed in 2.42.1 above, shall also be standard in all Mobi-Lite electronic signs ordered under this contract.
- 3.2.41.5 A Transign LLC 2-digit incandescent backlight, with anti-glare finish, dash mounted Block/Run Number Box shall be provided. White, red or yellow LED letters/numbers on a black background, displayed in a plastic or metal frame, to operate on a 12 volt system.

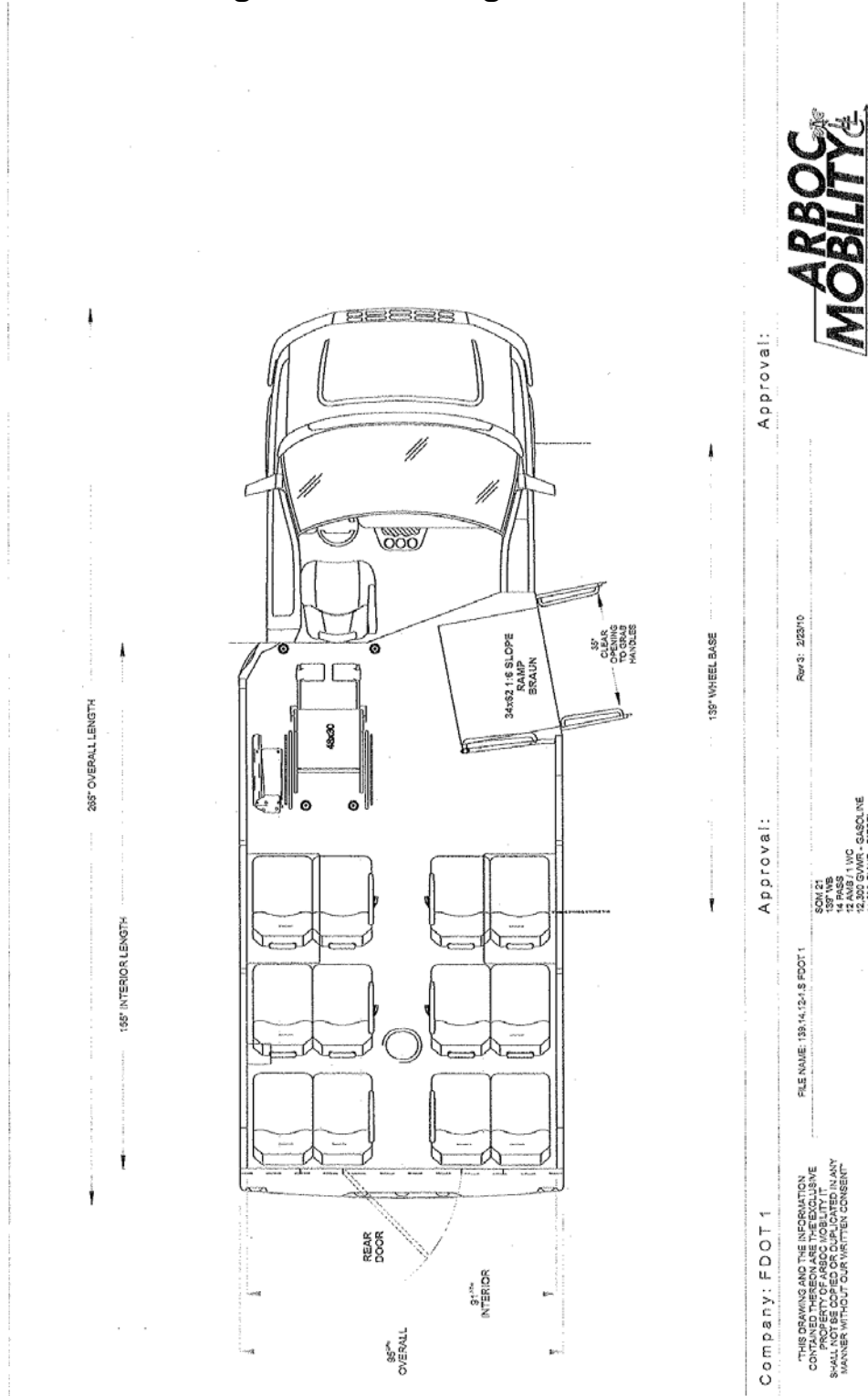
- 3.2.41.6 A Transign LLC 3-digit incandescent backlight, with anti-glare finish, dash mounted Block/Run Number Box shall be provided. White, red or yellow LED letters/numbers on a black background, displayed in a plastic or metal frame, to operate on a 12 volt system.
- 3.2.41.7 A "STOP REQUESTED" sign, as manufactured by Transign LLC installed in the front vestibule area. Sign is activated by passengers and de-activates with the opening of the passenger entry door. Injected molded with display area of 2.5 X 19.75 minimum. Provide a silk screened lens display face with yellow letters on green background, or as required by Purchaser.

EXHIBIT E

SAMPLE

FLOOR-PLAN LAYOUTS

22' Length - 12 Passenger 1 WC Position



Approval:

Approval:

Company: FDOT 1



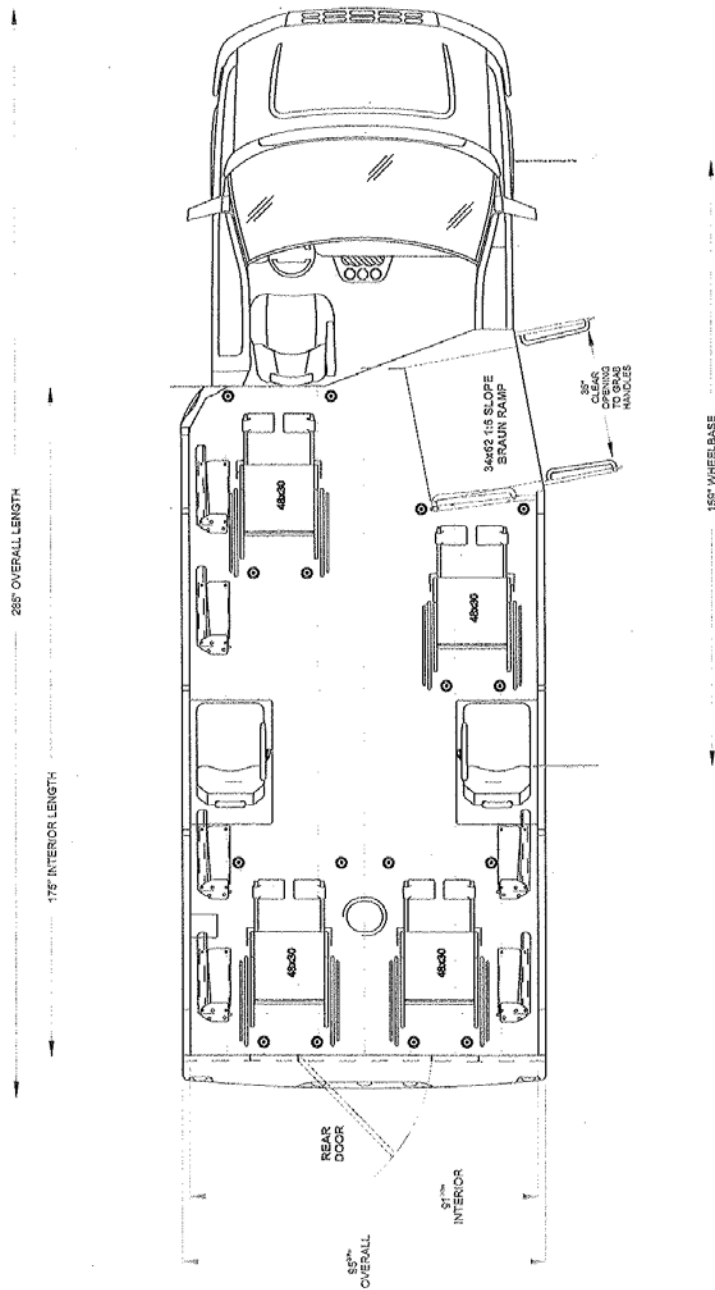
Rev 3: 2/23/10

FILE NAME: 13314127.8 FOOT 1

SOW 21
137' WB
12 AXES 1 WC
12,200 G/W/R - GASOLINE
14,200 G/W/R - DIESEL

"THIS DRAWING AND THE INFORMATION CONTAINED THEREON ARE THE EXCLUSIVE PROPERTY OF ARBOC MOBILITY. NO PART SHALL NOT BE COPIED OR REPRODUCED IN ANY MANNER WITHOUT OUR WRITTEN CONSENT"

22' Length - 14 Passengers 4 WC Positions



Approval:

Approval:

Company: FDOT 8

THIS DRAWING AND THE INFORMATION CONTAINED HEREIN ARE THE EXCLUSIVE PROPERTY OF ARBOC MOBILITY. IT SHALL NOT BE COPIED OR DUPLICATED IN ANY MANNER WITHOUT OUR WRITTEN CONSENT.

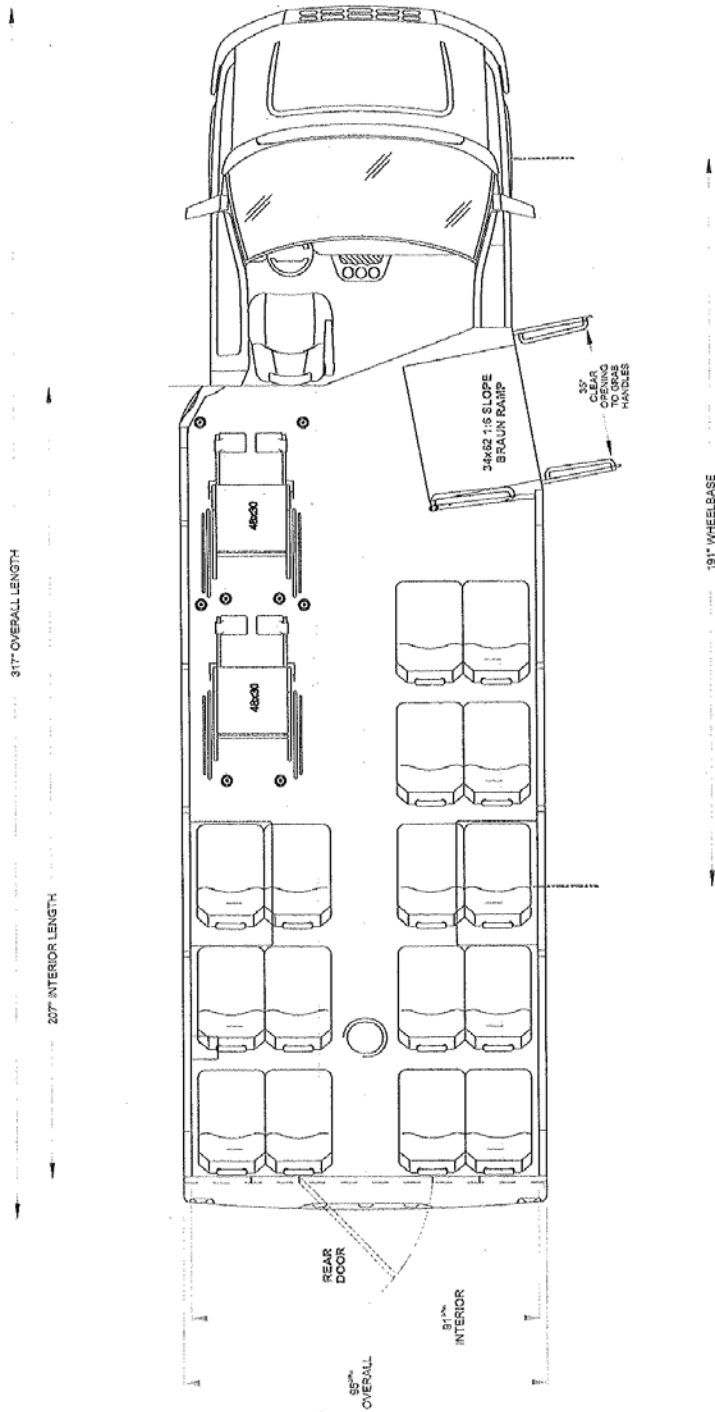
FILE NAME: 158.14.2-4-S FDOT 8

50W. 23
158.14.2
2A18/4 WC
12,000 GVWR - GAS
14,200 GVWR - DIESEL

Rev 2: 2/23/10



26' Length – 16 Passengers 2 WC Positions



Company: FDOT 11 Approval: Approval:

Rev 3: 22/11/10

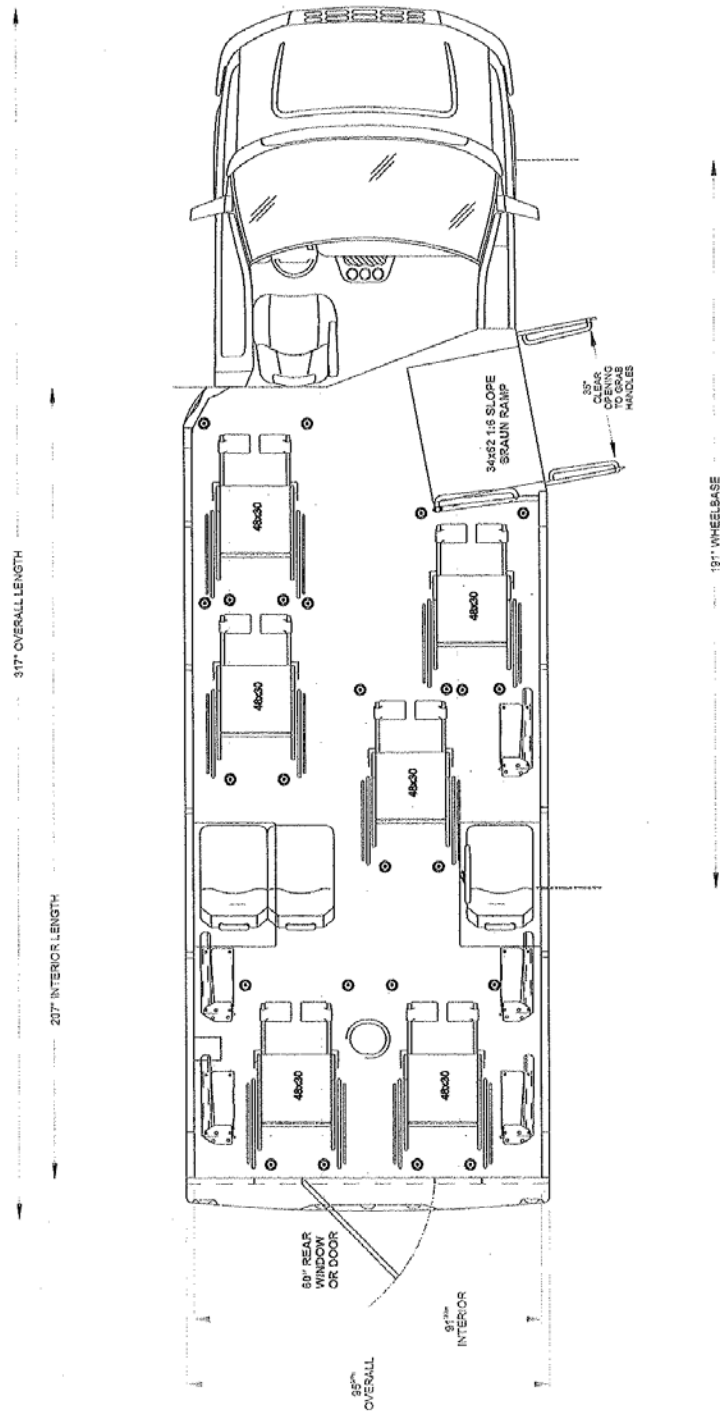
FILE NAME: 191.15.15-LS FDOT 11

SCM 26
191" WB
16 PASS
2 WC
14,200 GVWR - GAS

ARBOC MOBILITY

THIS DRAWING AND THE INFORMATION CONTAINED HEREIN ARE THE SOLE PROPERTY OF ARBOC MOBILITY. IT SHALL NOT BE COPIED OR DUPLICATED IN ANY MANNER WITHOUT OUR WRITTEN CONSENT.

26' Length – 13 Passengers 6 WC Positions



Company: FDOT

Approval:

Approval:

THIS DRAWING AND THE INFORMATION CONTAINED HEREIN ARE THE PROPERTY OF ARBOC MOBILITY. IT SHALL NOT BE COPIED OR DUPLICATED IN ANY MANNER WITHOUT OUR WRITTEN CONSENT.

FILE NAME: 191.0348 S FOOT

Rev 1: 2/14/10

SCM28
15' WB
13 PASS
14,200 GVWR

